

PROCEDURA SELETTIVA PUBBLICA, PER TITOLI ED ESAMI, PER LA COSTITUZIONE DI RAPPORTO DI LAVORO A TEMPO DETERMINATO E PIENO, PER LA DURATA DI UN ANNO, CON 1 UNITA' DI PERSONALE DA INQUADRARE NELLA CATEGORIA D, POSIZIONE ECONOMICA D1, AREA TECNICA, TECNICO-SCIENTIFICA ED ELABORAZIONE DATI, PER LE ESIGENZE DEL DIPARTIMENTO DI SCIENZE DELLA TERRA, DELL'AMBIENTE E DELLA VITA DA ADIBIRE ALLE ATTIVITA' PROPRIE DEL PROGETTO DI RICERCA CONCERNENTE LO "STUDIO DELL'AMBIENTE PELAGICO E MESOPELAGICO DEL MAR LIGURE", INDETTA CON D.D.G. N. 4798 DEL 5.10.2018, PUBBLICATO NELLA G.U. N. 87-IV SERIE SPECIALE DEL 2.11.2018

Adempimenti di cui all'art. 19 del D.lgs n. 33/2013, come modificato dall'art. 18 del D.lgs n. 97/2016

TRACCE DELLA PRIMA PROVA SCRITTA

Il giorno 9.1.2019 alle ore 8.00 presso il DISTAV - Dipartimento di Scienze della Terra, dell'Ambiente e della Vita - Palazzo delle Scienze - Aula 6.23 - Corso Europa, 26 ha avuto luogo la seconda riunione della Commissione esaminatrice della procedura di cui al titolo, per lo svolgimento della prima prova scritta.

La Commissione, regolarmente convocata e presente al completo, dopo ampia discussione, ha stabilito, a norma dell'art. 12, comma 6 del "Regolamento di assunzione del personale tecnico amministrativo" di questo Ateneo, le seguenti tre tracce:

Traccia N.1

Descrizione dei metodi di campionamento e delle tecniche da adottare per la determinazione dell'età nei pesci.

Traccia N. 2

La pesca pelagica: attrezzi, specie bersaglio e raccolta dei campioni necessari per definire i parametri da inserire nelle valutazioni degli stock (stock assessment).

Traccia N. 3

Principali metodi e strumenti di monitoraggio ambientale offshore, con particolare riferimento allo studio dell'uso dell'habitat delle principali specie pelagiche.

E' stata estratta la prova indicata con il n. 2.

TRACCE DELLA SECONDA PROVA SCRITTA A CONTENUTO TEORICO-PRATICO

Il giorno 9.1.2019 alle ore 13.00 presso il DISTAV - Dipartimento di Scienze della Terra, dell'Ambiente e della Vita - Palazzo delle Scienze - Aula 6.23 - Corso Europa, 26, ha avuto luogo la terza riunione della Commissione esaminatrice della procedura di cui al titolo, per lo svolgimento della seconda prova scritta a contenuto teorico-pratico.

La Commissione, regolarmente convocata e presente al completo, dopo ampia discussione, ha stabilito, a norma dell'art. 12, comma 6 del "Regolamento di assunzione del personale tecnico amministrativo" di questo Ateneo, le seguenti tre tracce:

Traccia N. 1 con allegato

Il seguente set di dati riporta i risultati di campionamento effettuato per 9 mesi nei confronti di una data specie

A. Sulla base dei campioni esaminati:

a) calcolare la sex-ratio

b) determinare il periodo riproduttivo della specie

c) effettuare le elaborazioni necessarie e sufficienti propedeutiche al calcolo della taglia di prima maturità sessuale (L50) delle femmine (maturità con Indice Gonadosomatico (IGS) ≥ 1 - (Le classi di taglia delle

distribuzioni di frequenza sono calcolate ai 5 cm inferiori (es. la classe 50cm comprende tutti i pesci racchiusi tra 50cm e 54.5cm).

Traccia 2 con allegato

I dati forniti rappresentano le catture di una specie A compiute nell'arco di un mese da una marineria in cui operano 6 imbarcazioni con LLD: i dati sono stati raccolti sia da rilevatori sia da log-books. Sulla base del seguente set di dati:

- a) Stimare le catture ed i rendimenti (CPUE) totali del periodo (in numero e peso).
- b) Stimare i rendimenti e le catture totali delle singole imbarcazioni e gli altri parametri richiesti come da tabella in calce ai dati.
- c) Calcolare la distribuzione lunghezza/frequenza degli esemplari catturati, sulla base dei dati reali e delle stime di lunghezza (Le classi di taglia delle distribuzioni di frequenza sono calcolate ai 5 cm inferiori (es. la classe 50cm comprende tutti i pesci racchiusi tra 50cm e 54.5cm)

Traccia 3 con allegato

Vengono fornite le immagini di 15 sezioni di raggi di pesce spada, fotografate in luce trasmessa. Vengono altresì forniti i parametri di alcune curve di crescita del pesce spada.

Il candidato dovrà:

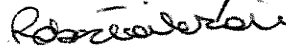
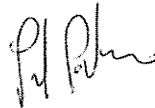
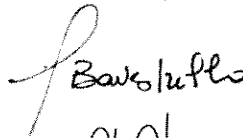
- a) stabilire l'età dei singoli individui.
- b) sviluppare il grafico delle curve di crescita di von Bertalanffy con i parametri forniti.
- c) inserire i dati sperimentali nello stesso grafico.

E' stata estratta la prova indicata con il n. 3.

Genova, 9 gennaio 2019

La Commissione:

- | | |
|-----------------------|------------|
| - Giorgio Bavestrello | Presidente |
| - Paolo Povero | Componente |
| - Marzia Bo | Componente |
| - Roberta Verdi | Segretario |



ALEGATO N° 1

Month	Length	Round Weight (kg)	SEX	Gonad weight (g)
01 April 2018	120	16	F	14
01 April 2018	127	23	M	46
01 April 2018	141	32,5	F	148
01 April 2018	156	48	M	182
01 April 2018	181	60	F	482
01 May 2018	107	11,5	F	13
01 May 2018	118	16	M	18
01 May 2018	123	20	F	86
01 May 2018	127	21,5	M	124
01 May 2018	132	23,5	M	58
01 May 2018	134	28	M	60
01 May 2018	135	29	M	66
01 May 2018	140	27	F	118
01 May 2018	144	36,5	F	238
01 May 2018	149	45	F	450
01 May 2018	161	46,7	F	330
01 May 2018	170	45	F	560
01 May 2018	178	63	F	650
01 May 2018	201	87,5	F	960
01 June 2018	74	3,9	F	3,5
01/06/18	82	4,5	M	3,8
01/06/18	84,5	4,5	M	8,2
01/06/18	89	5	M	3,2
01 June 2018	102	12	F	5,6
01 June 2018	103	8,9	F	19
01 June 2018	105	9,5	F	14,3
01/06/18	105	9,8	M	7,3
01/06/18	112	14,5	M	42,8
01/06/18	115	20	M	48,6
01 June 2018	141	32,5	F	1254
01 June 2018	161	47	F	1004
01 June 2018	162	46	F	1230
01 June 2018	164	44	F	823
01 June 2018	173	57,5	F	845
01 June 2018	174	54,5	F	930
01 June 2018	176	67	F	1090
01 July 2018	72,5	3,5	M	0,6
01 July 2018	73,5	3,5	M	0,8
01 July 2018	75	3,5	F	1,55
01 July 2018	76	3,5	F	3,47
01 July 2018	76	4	M	1,1
01 July 2018	76	3	M	0,5
01 July 2018	76	3,8	M	1,5
01 July 2018	76,5	4	F	4,5
01 July 2018	77	3,8	M	3
01 July 2018	77,5	3,5	M	1,5
01 July 2018	77,5	3,5	M	1,2
01 July 2018	79,5	3,7	F	9
01 July 2018	80	4	F	6,5
01 July 2018	80	3,5	F	5
01 July 2018	80	4,5	F	6,2
01 July 2018	80	4	M	1,7
01 July 2018	80	4	M	0,6
01 July 2018	80	5	M	1,5
01 July 2018	80,5	4	F	4,5
01 July 2018	81,5	4	M	1,32
01 July 2018	82	4,5	F	8,8
01 July 2018	82	4	M	2,2
01 July 2018	82	4,5	M	2,2
01 July 2018	82,5	4,5	F	6,8
01 July 2018	82,5	3,5	M	0,7
01 July 2018	83	4,5	F	5
01 July 2018	83,5	4	M	0,93
01 July 2018	84	4,8	F	6,9
01 July 2018	84	5,3	M	3,2
01 July 2018	84	8	M	4,1
01 July 2018	84,5	4,5	M	4
01 July 2018	85	5	F	6,3
01 July 2018	85	4,5	F	7,7
01 July 2018	85	5	F	7,4
01 July 2018	86	5,5	F	10,1
01 July 2018	86	4	M	1,4

01 July 2018	86	4,5		
01 July 2018	86	5,8	M	3,2
01 July 2018	86,5	5,5	M	2,6
01 July 2018	87	5,5	F	4,3
01 July 2018	87,5	5,5	F	8,8
01 July 2018	87,5	4,5	F	12,2
01 July 2018	88	6	M	1,6
01 July 2018	88	5,5	M	3,3
01 July 2018	88,5	6	M	2,2
01 July 2018	88,5	6,5	F	6,6
01 July 2018	89	6,5	M	1,9
01 July 2018	89	6,5	F	9,5
01 July 2018	89,5	6	F	14,5
01 July 2018	89,5	7	F	7,2
01 July 2018	90	8	M	3,6
01 July 2018	91	6,5	F	12,9
01 July 2018	91,5	8,5	M	3,9
01 July 2018	92	6,5	F	13,9
01 July 2018	92	9	F	17,2
01 July 2018	92	8,5	F	14
01 July 2018	94	6	M	5
01 July 2018	94	7	F	11,3
01 July 2018	94	8	F	17,3
01 July 2018	95	9,5	M	8,2
01 July 2018	95	9,5	F	12,5
01 July 2018	95	9	F	11,4
01 July 2018	98	8,8	F	15,2
01 July 2018	98	10	F	12,1
01 July 2018	98	11	F	27,9
01 July 2018	98	12	F	19,9
01 July 2018	98	9	F	63,9
01 July 2018	98	9	M	9,8
01 July 2018	98	10	M	3,6
01 July 2018	99	7,5	M	6,5
01 July 2018	99	9,5	F	16,2
01 July 2018	100	11,5	F	18,9
01 July 2018	100	12	F	21
01 July 2018	100	10	M	14,3
01 July 2018	102	12	M	8,6
01 July 2018	104	12,5	M	10,1
01 July 2018	104	10	M	14,8
01 July 2018	104	10,5	M	44,5
01 July 2018	104	11	M	8
01 July 2018	104	12	M	10,8
01 July 2018	105	11	M	17,1
01 July 2018	105	11,5	F	28,8
01 July 2018	105	12,5	F	26,7
01 July 2018	105	10,5	F	28,6
01 July 2018	105	11	M	16
01 July 2018	105	12	M	22,4
01 July 2018	105	13	M	15,9
01 July 2018	105,5	13	M	15,4
01 July 2018	106	10	M	11,6
01 July 2018	106	10,5	M	12,5
01 July 2018	107	11	M	8,31
01 July 2018	107	11,5	F	34,8
01 July 2018	107,5	12	F	36,4
01 July 2018	107,5	13	M	17,6
01 July 2018	108	13	M	13,7
01 July 2018	108	11	F	46,3
01 July 2018	108,5	11,5	M	16,5
01 July 2018	108,5	12,5	F	26,1
01 July 2018	108,5	11,5	F	31,8
01 July 2018	109	12	M	9
01 July 2018	109	12	F	33,4
01 July 2018	109,5	13,5	F	34,1
01 July 2018	110	11,5	F	39
01 July 2018	110	12,5	F	26,3
01 July 2018	110	14,5	F	31,9
01 July 2018	110	13	F	12,7
01 July 2018	110	15	M	15,4
01 July 2018	110	15,5	M	51,4
01 July 2018	110,5	14	M	10,2
			M	18,7

01 July 2018	111	14	M	17,7
01 July 2018	112	13	F	38,2
01 July 2018	112	12	M	20,5
01 July 2018	112	14,5	M	12,6
01 July 2018	113	15	F	52
01 July 2018	113	17	F	83,6
01 July 2018	113	14,5	M	30,4
01 July 2018	113,5	16,5	F	56,8
01 July 2018	114	16	F	32,6
01 July 2018	114	14	M	9,8
01 July 2018	114	15	M	23,5
01 July 2018	114	17,5	M	12,5
01 July 2018	114,5	15	M	17
01 July 2018	115	13,5	F	33,8
01 July 2018	115	17	F	45,1
01 July 2018	115	19	F	70
01 July 2018	115	12	M	39,6
01 July 2018	115	16	M	46
01 July 2018	115	19,5	M	34,5
01 July 2018	115	21	M	19,7
01 July 2018	115,5	17	M	49,5
01 July 2018	116	17	F	35,3
01 July 2018	116	15	M	20,9
01 July 2018	116,5	15,5	M	10,7
01 July 2018	117	16	F	76,4
01 July 2018	117	16,5	M	45,9
01 July 2018	117	18	M	39,4
01 July 2018	118	19	M	34,2
01 July 2018	118	19,5	M	10,82
01 July 2018	119	19,5	F	60
01 July 2018	119	17,5	M	14,5
01 July 2018	119	19	M	58
01 July 2018	119	21,5	M	32
01 July 2018	119	21,5	M	100
01 July 2018	120	18,5	F	32,8
01 July 2018	120	16,5	M	24,8
01 July 2018	120,5	18	M	16,7
01 July 2018	121	18,5	M	14,8
01 July 2018	121	19	M	33,1
01 July 2018	121,5	18	M	37,6
01 July 2018	122	21,5	F	84
01 July 2018	122	19	M	36
01 July 2018	123	16,5	F	51,1
01 July 2018	123	18	F	55,3
01 July 2018	123	18	F	57,9
01 July 2018	123	22	F	103
01 July 2018	123	18	M	37,6
01 July 2018	123	20,5	M	61
01 July 2018	123	20,5	M	117
01 July 2018	123	20,5	M	142,8
01 July 2018	123	22	M	85
01 July 2018	124	19	M	96
01 July 2018	124	19,5	M	50,8
01 July 2018	124	20,5	M	59,8
01 July 2018	124	24	M	67,5
01 July 2018	125	19,5	F	78,4
01 July 2018	125	22	F	74
01 July 2018	125	23	F	76,15
01 July 2018	125	24	F	91,4
01 July 2018	125	19,5	M	28
01 July 2018	125	21	M	persa
01 July 2018	125	23	M	36,4
01 July 2018	125	23	M	67
01 July 2018	125,5	19	M	20,4
01 July 2018	126	22	M	35,1
01 July 2018	127	25	F	118,2
01 July 2018	127	24,5	F	359
01 July 2018	127	24	M	70
01 July 2018	128	21	M	41,6
01 July 2018	128	24	M	35,4
01 July 2018	128	24	M	57,6
01 July 2018	128	25,5	M	95
01 July 2018	128	25,5	M	75

01 July 2018	128,5	22	M	39,1
01 July 2018	129	20	F	95
01 July 2018	129	21,5	F	102
01 July 2018	129	21,5	M	52
01 July 2018	129	23,5	M	40,1
01 July 2018	129	25	M	49,9
01 July 2018	129	28	M	73
01 July 2018	130	24,5	F	107
01 July 2018	130	22	M	41
01 July 2018	130,5	25,5	M	172,9
01 July 2018	131	22	F	64
01 July 2018	131	24	F	61,7
01 July 2018	132	25	F	92
01 July 2018	132	28	F	148,1
01 July 2018	132	27,5	F	361
01 July 2018	132	29	M	103,3
01 July 2018	132	32	M	63,5
01 July 2018	133	23	F	1795
01 July 2018	133	25,5	F	89
01 July 2018	133	29	F	189
01 July 2018	133	29	F	75,2
01 July 2018	133	31	M	185
01 July 2018	134,5	27,5	F	89
01 July 2018	136	24,5	F	100
01 July 2018	136	29,5	F	132
01 July 2018	137	31	F	96
01 July 2018	137	31,5	F	93
01 July 2018	138	33,5	F	155
01 July 2018	138	28	M	170
01 July 2018	138	29	M	51,1
01 July 2018	141	28,5	F	114
01 July 2018	141	32,5	F	661
01 July 2018	141	37	F	72,8
01 July 2018	142	35,5	F	1650
01 July 2018	143	29,5	F	132
01 July 2018	143	29	M	66,4
01 July 2018	143	29	M	121
01 July 2018	143	32,5	M	189,7
01 July 2018	143	37	M	97
01 July 2018	144	46	F	3340
01 July 2018	146	33,5	F	1050
01 July 2018	146	39	F	1120
01 July 2018	147	35	F	982
01 July 2018	148,5	39	M	104,6
01 July 2018	149	41	F	1878
01 July 2018	150	36	F	107
01 July 2018	150	46,5	F	191
01 July 2018	150	45	F	4300
01 July 2018	151	34	F	2394
01 July 2018	152,5	44	F	1804
01 July 2018	153	38,5	F	129
01 July 2018	153	42	F	208
01 July 2018	154	44	F	2517
01 July 2018	154	53	F	2900
01 July 2018	155	48,5	F	1052
01 July 2018	157	48	F	4500
01 July 2018	157	53,5	F	5454
01 July 2018	157	33,5	M	128
01 July 2018	158	42,5	F	2840
01 July 2018	159	36	F	1876
01 July 2018	160	43	F	2265
01 July 2018	160	48	F	1894
01 July 2018	160	52,5	M	5,18
01 July 2018	161	46,5	F	2200
01 July 2018	162	49,5	F	477
01 July 2018	162	50	F	1080
01 July 2018	164	46	F	2114
01 July 2018	164	55	F	1743
01 July 2018	165	43	F	1717
01 July 2018	167	49	F	1696
01 July 2018	171	59,5	F	1400
01 July 2018	174	58	F	2917
01 July 2018	176	70	F	3800

01 July 2018	178	71,5	F	3110
01 July 2018	180	75	F	3080
01 July 2018	181	58	F	4615
01 July 2018	188	74	F	2150
01 July 2018	196	91	F	4530
01 July 2018	202	92	F	9000
01 August 2018	75	4,2	M	1,6
01 August 2018	78	3,5	M	1,2
01 August 2018	79	4	M	1,8
01 August 2018	81	4	F	8,2
01 August 2018	81	4	F	9,3
01 August 2018	81	4	M	2,6
01 August 2018	81	4	M	8,3
01 August 2018	82,5	4,7	F	8,2
01 August 2018	83	6,5	M	5,8
01 August 2018	84	5	F	7,9
01 August 2018	84,5	4	M	2,5
01 August 2018	85	4,5	F	7
01 August 2018	85	5,5	F	5,5
01 August 2018	85	6	F	7,8
01 August 2018	85	5,5	M	3,9
01 August 2018	85	5,5	M	2,4
01 August 2018	85,5	7	F	9,7
01 August 2018	86	5	F	5,8
01 August 2018	86	5	F	8,4
01 August 2018	87	6	F	6,1
01 August 2018	87	7	F	15,1
01 August 2018	87	5	M	4
01 August 2018	87	5,5	M	3,1
01 August 2018	88	4,5	F	7,4
01 August 2018	88	6	M	10,2
01 August 2018	88	6	M	4,6
01 August 2018	89	8	F	8,7
01 August 2018	89	5	M	3,1
01 August 2018	89	6,5	M	2,7
01 August 2018	90	7,5	F	12,7
01 August 2018	90	8	F	9,65
01 August 2018	90	7	M	3,1
01 August 2018	90	7,5	M	1,9
01 August 2018	91	7	F	9,2
01 August 2018	91	7,5	F	11,8
01 August 2018	91	6,5	M	2,8
01 August 2018	91,5	7	M	1,9
01 August 2018	91,5	8	M	9,9
01 August 2018	92	8	F	11
01 August 2018	92	8	F	4,6
01 August 2018	92	8	M	2,2
01 August 2018	92	8,5	M	4,4
01 August 2018	92	5,5	M	6,2
01 August 2018	92	7	M	3,7
01 August 2018	92	9	M	5
01 August 2018	92,5	7	M	19,8
01 August 2018	93	6	F	9,8
01 August 2018	93	8	F	7,4
01 August 2018	94	9	F	13,4
01 August 2018	94	7	F	7,5
01 August 2018	94	9	F	9,7
01 August 2018	94	9	F	13,5
01 August 2018	94	7,5	M	4,8
01 August 2018	94	8,5	M	5,4
01 August 2018	94	9,5	M	5,7
01 August 2018	94,5	9	M	8,65
01 August 2018	95	6	M	4,4
01 August 2018	95	8,5	M	2,6
01 August 2018	95	9,5	M	2,8
01 August 2018	96	8,5	F	11,9
01 August 2018	96	8	F	12,1
01 August 2018	96	8	F	9,6
01 August 2018	96	6	M	5,2
01 August 2018	96,5	7,5	M	2,1
01 August 2018	97	7,5	F	16,1
01 August 2018	97	8	F	16,5
01 August 2018	97	9,5	F	9,9

01 August 2018	97	9,5	F	15,2
01 August 2018	97	9	M	5
01 August 2018	97,5	10	F	14,8
01 August 2018	98	9	F	15,5
01 August 2018	98	9,5	F	14
01 August 2018	98	9	F	11,1
01 August 2018	98	10	F	18,2
01 August 2018	98	10	F	9,1
01 August 2018	98	9	M	6,2
01 August 2018	98	10	M	4,7
01 August 2018	98	10	M	4,3
01 August 2018	99	8	F	16
01 August 2018	99	11	F	16
01 August 2018	99	8	M	4,2
01 August 2018	100	10,5	M	12,3
01 August 2018	100	9	M	6,3
01 August 2018	101	10,5	F	23,4
01 August 2018	101	9	F	17,2
01 August 2018	101	10	F	17,5
01 August 2018	101	12	M	24,4
01 August 2018	101	6,5	M	3
01 August 2018	102	12	F	11
01 August 2018	102	13,5	F	20,7
01 August 2018	102	10	M	22
01 August 2018	102	10	M	10,1
01 August 2018	102	10	M	5,1
01 August 2018	102,5	10,5	F	22,3
01 August 2018	103	11	F	35
01 August 2018	103	11	F	12
01 August 2018	103	11,5	F	65
01 August 2018	103	9,5	M	3
01 August 2018	103	11	M	8
01 August 2018	103	11	M	8,2
01 August 2018	103	11,5	M	3,2
01 August 2018	103	13	M	7,15
01 August 2018	104	14	F	35
01 August 2018	104	13,5	F	18
01 August 2018	104	9,5	F	25
01 August 2018	104	12	M	14,8
01 August 2018	104	9	M	4,4
01 August 2018	104	11,5	M	10,5
01 August 2018	104	11,5	M	23,9
01 August 2018	104	12	M	17,8
01 August 2018	104	12	M	17,1
01 August 2018	104	12,5	M	5,77
01 August 2018	104,5	12	F	29
01 August 2018	105	11	F	21
01 August 2018	105	15	F	18
01 August 2018	105	15	M	16,5
01 August 2018	105	12	M	22,6
01 August 2018	106	11	F	29
01 August 2018	106	12	F	29
01 August 2018	106	13	F	40
01 August 2018	106	15	F	71
01 August 2018	107	14	M	26,9
01 August 2018	107	14,5	M	9,5
01 August 2018	107,5	14,5	F	22
01 August 2018	108	14	F	15,2
01 August 2018	108	13	F	15,6
01 August 2018	108	13	F	40,2
01 August 2018	108	11,5	M	10,2
01 August 2018	108	13,5	M	5,3
01 August 2018	108	17,5	M	18,4
01 August 2018	108	18,5	M	24,2
01 August 2018	109	12,5	F	23,8
01 August 2018	109	13,5	F	27,3
01 August 2018	109	10	M	6,22
01 August 2018	109	12	M	14,3
01 August 2018	109	14,5	M	27,4
01 August 2018	110	14,5	F	47,32
01 August 2018	110	15	F	37,1
01 August 2018	110	15,5	F	39
01 August 2018	110	11,5	M	12,2

01 August 2018	110	14	M	15
01 August 2018	110	14	M	13,3
01 August 2018	110	14	M	12,9
01 August 2018	110	15	M	13,4
01 August 2018	111	16	F	34,4
01 August 2018	111	16,5	F	18,3
01 August 2018	111	13	F	29,8
01 August 2018	111	18,5	F	55,4
01 August 2018	111	17	M	6,1
01 August 2018	111	12	M	18,9
01 August 2018	111	13,5	M	14,1
01 August 2018	112	12,5	F	48
01 August 2018	112	14	M	5
01 August 2018	112	13,5	M	12,4
01 August 2018	112	14,5	M	8,4
01 August 2018	112	14,5	M	18,7
01 August 2018	112	14,5	M	12,6
01 August 2018	112	16,5	M	39
01 August 2018	112	18	M	13,9
01 August 2018	112	18,5	M	18,7
01 August 2018	112,5	15	M	28,2
01 August 2018	112,5	15	M	38,4
01 August 2018	113	18	F	72
01 August 2018	113	15,5	M	11,1
01 August 2018	113	17	M	27,9
01 August 2018	114	15	F	51
01 August 2018	114	16,5	F	81
01 August 2018	114	14,5	M	12,1
01 August 2018	114	15	M	6,8
01 August 2018	114	15	M	16
01 August 2018	114	17	M	17,6
01 August 2018	114	18	M	19,4
01 August 2018	114	19	M	55,9
01 August 2018	114,5	17,5	F	92
01 August 2018	115	13	F	25
01 August 2018	115	14	F	48
01 August 2018	115	15	F	65
01 August 2018	115	16	F	44
01 August 2018	115	17	F	89
01 August 2018	115	15	M	25
01 August 2018	115	16	M	14,7
01 August 2018	115	17	M	17,1
01 August 2018	115,5	16,5	M	15,7
01 August 2018	115,5	17	M	49,5
01 August 2018	116	16,5	F	95
01 August 2018	116	17	F	52
01 August 2018	116	17	F	80
01 August 2018	116	19,5	F	87
01 August 2018	116	20	F	52
01 August 2018	116	15	M	20,9
01 August 2018	116	15,5	M	24,7
01 August 2018	116	23	M	47,9
01 August 2018	116,5	22	F	66,2
01 August 2018	118	17,5	M	9
01 August 2018	118	15	M	13,4
01 August 2018	118	15	M	17,7
01 August 2018	119	15,5	F	34,5
01 August 2018	119	18,5	F	38,3
01 August 2018	119	19	F	54,6
01 August 2018	119	20	F	63,3
01 August 2018	119	22	F	35,4
01 August 2018	119	22,5	F	102,1
01 August 2018	119	23	F	48,5
01 August 2018	119	13	M	26,6
01 August 2018	119,5	20	M	15,1
01 August 2018	120	21	F	45
01 August 2018	120	16,5	M	30,3
01 August 2018	120	18	M	44,6
01 August 2018	120	18	M	14,45
01 August 2018	120	19,5	M	18,93
01 August 2018	120	20	M	38,7
01 August 2018	120	20,5	M	30,4
01 August 2018	120	22,5	M	26,5

01 August 2018	121	19	F	57,7
01 August 2018	121	19,5	F	144,9
01 August 2018	121	22	F	53,5
01 August 2018	121	19,5	M	28,4
01 August 2018	121	17,5	M	70
01 August 2018	121	18,5	M	14,8
01 August 2018	121	19	M	50
01 August 2018	121	19	M	30,1
01 August 2018	121	19	M	35,4
01 August 2018	121	22	M	10,3
01 August 2018	122	18	F	47,7
01 August 2018	122	21	F	67,3
01 August 2018	122	18	M	55,9
01 August 2018	122,5	20,5	F	81
01 August 2018	122,5	21	M	25,3
01 August 2018	123	19	F	51,1
01 August 2018	123	20	F	51,8
01 August 2018	123	21,5	F	53,1
01 August 2018	123	17,5	M	11,4
01 August 2018	123,5	20	F	50,1
01 August 2018	124	20,5	F	59,6
01 August 2018	124	21,5	F	53,6
01 August 2018	124	24	F	51,9
01 August 2018	124	30	F	73,9
01 August 2018	124	19	M	23,9
01 August 2018	124	21	M	25,8
01 August 2018	124	22	M	21,52
01 August 2018	124	23	M	18,6
01 August 2018	124,5	20,5	M	17,6
01 August 2018	125	19	F	50
01 August 2018	125	21,5	F	82,1
01 August 2018	125	26	F	171,3
01 August 2018	125	22	M	18
01 August 2018	126	23	F	184
01 August 2018	126	24	F	155
01 August 2018	126	19,5	M	34,7
01 August 2018	126,5	24,5	F	158,4
01 August 2018	126,5	22	M	52,8
01 August 2018	127	26	F	162
01 August 2018	127	26,5	F	198
01 August 2018	127	21	M	55,51
01 August 2018	127	21,5	M	22,8
01 August 2018	127	23	M	45,2
01 August 2018	127	24	M	70
01 August 2018	127	26,5	M	57
01 August 2018	127,5	22,5	F	137
01 August 2018	128	23,5	M	37,8
01 August 2018	128	24	M	34,5
01 August 2018	128	24	M	47,5
01 August 2018	128	26	M	39,4
01 August 2018	128	26	M	68
01 August 2018	128	30	M	47,7
01 August 2018	129	22,5	F	166
01 August 2018	129	23	F	70,1
01 August 2018	129	24	F	85
01 August 2018	129	30	F	64,3
01 August 2018	129	21,5	M	26,3
01 August 2018	130	24	F	71
01 August 2018	130	24,5	F	94
01 August 2018	130	26	F	71
01 August 2018	130	27,5	F	169,5
01 August 2018	130	30	F	30,4
01 August 2018	130	23	M	18,3
01 August 2018	130	23	M	14,4
01 August 2018	130	25,5	M	38,1
01 August 2018	130	29	M	51,3
01 August 2018	131	25	M	36,88
01 August 2018	132	27	M	33,1
01 August 2018	132	23,5	M	21
01 August 2018	132	25	M	35,5
01 August 2018	132	26	M	54,9
01 August 2018	132	30	M	111,1
01 August 2018	132,5	25	F	84

01 August 2018	133	28	F	75
01 August 2018	133	32	F	123,5
01 August 2018	133	24	M	30,9
01 August 2018	133,5	28	F	100
01 August 2018	134	27,5	F	103
01 August 2018	134	30	F	83
01 August 2018	134	26	M	67
01 August 2018	134	29,5	M	62
01 August 2018	134	30,5	M	112,4
01 August 2018	135	23	M	30,5
01 August 2018	135	30	M	33,3
01 August 2018	135,5	25	F	74
01 August 2018	136	26,5	F	350
01 August 2018	136	27	F	80
01 August 2018	136	27,5	F	93
01 August 2018	136	28	F	878
01 August 2018	136	34	F	1841
01 August 2018	136	37	F	1644
01 August 2018	136	25	M	31,3
01 August 2018	136,5	29	M	17,7
01 August 2018	137	27	F	88
01 August 2018	137	32	F	85
01 August 2018	137	29	M	98
01 August 2018	137	32	M	45,04
01 August 2018	137	32	M	57,1
01 August 2018	138	26	F	79
01 August 2018	138	27,5	F	124
01 August 2018	138	30,5	F	99
01 August 2018	138	33	F	230
01 August 2018	138	26,5	M	31,5
01 August 2018	138	29,5	M	63
01 August 2018	138,5	29	M	21,77
01 August 2018	139	29,5	F	232
01 August 2018	139	30	F	89,9
01 August 2018	139	30,5	F	136
01 August 2018	139	23	M	73,2
01 August 2018	139	33,5	M	36,4
01 August 2018	139	33,5	M	35,4
01 August 2018	140	28	F	102
01 August 2018	140	29,5	F	110
01 August 2018	140	38	F	128
01 August 2018	140	32	M	68,9
01 August 2018	140	33,5	M	47,7
01 August 2018	140,5	28,5	F	142
01 August 2018	141	35	F	59,2
01 August 2018	141	31,5	M	59,8
01 August 2018	142	27,5	F	89,5
01 August 2018	142	42	F	215
01 August 2018	142	29	M	91
01 August 2018	142	30	M	47,9
01 August 2018	142	34,5	M	50
01 August 2018	142	35	M	62,9
01 August 2018	142,5	29,5	F	155
01 August 2018	142,5	30	M	59,1
01 August 2018	143	34	F	128,1
01 August 2018	143	34	M	128,1
01 August 2018	144,5	40	M	115
01 August 2018	145	35	F	132
01 August 2018	145	35	M	58
01 August 2018	146	28,5	F	97,5
01 August 2018	146	35	F	1419
01 August 2018	146	36,5	F	278
01 August 2018	147	40	F	172,5
01 August 2018	147	40,5	F	158
01 August 2018	147,5	35	F	309
01 August 2018	148	35,5	F	1754
01 August 2018	148	36	F	305
01 August 2018	148	40,5	F	1584
01 August 2018	148	35,5	M	58
01 August 2018	148,5	42	F	221
01 August 2018	148,5	39	M	104,6
01 August 2018	149	37	F	256
01 August 2018	149	40	F	1459

Handwritten signatures and initials, including a large stylized signature and the initials 'RIM'.

01 August 2018	149,5	37	F	167
01 August 2018	150	38,5	F	158
01 August 2018	150	39,5	F	2511
01 August 2018	150	45	F	1891
01 August 2018	150,5	37	F	1422
01 August 2018	150,5	40,5	F	1040
01 August 2018	151	38,5	F	776
01 August 2018	151	43	F	182
01 August 2018	151	43,5	F	117,3
01 August 2018	151	51	F	1620
01 August 2018	151	56	F	1920
01 August 2018	152	39	F	84,2
01 August 2018	152	40	F	2528
01 August 2018	152	46,5	F	1204
01 August 2018	153	40,5	F	448
01 August 2018	153	42	F	250
01 August 2018	153	47	F	998
01 August 2018	153	54,5	F	240
01 August 2018	154	30	F	196
01 August 2018	154	41	F	1699
01 August 2018	154	45,5	M	50,3
01 August 2018	154,5	38,5	M	68
01 August 2018	157	41	F	1455
01 August 2018	157	44	F	1454
01 August 2018	158	44,5	F	1634
01 August 2018	158	47	F	1200
01 August 2018	159	55	F	1184
01 August 2018	160,5	43	F	1650
01 August 2018	160,5	51	F	1865
01 August 2018	162	48,5	F	2520
01 August 2018	163	47	F	1160
01 August 2018	165	55	F	2550
01 August 2018	165	56	F	1428
01 August 2018	167	53	F	1303
01 August 2018	170	62	F	2928
01 August 2018	171,5	57	F	2576
01 August 2018	172	60	F	1245
01 August 2018	173	50,5	F	8000
01 August 2018	173	61,5	F	747
01 August 2018	173	63,5	F	1110
01 August 2018	175	49	F	1107
01 August 2018	175	65,5	F	2130
01 August 2018	175,5	58,5	F	971
01 August 2018	178	57,5	F	699
01 August 2018	178	65	F	958
01 August 2018	179	59,5	F	1190
01 August 2018	182	67	F	2622
01 August 2018	182	71	F	3452
01 August 2018	186	62,5	F	1636
01 August 2018	192	81	F	2450
01 August 2018	194	87	F	3560
01 September 2018	59	1,63	M	0,6
01 September 2018	61,5	1,3	F	0,4
01 September 2018	62	1,2	F	0,3
01 September 2018	62	1,545	M	0,7
01 September 2018	63	2,5	F	1,4
01 September 2018	63	1,915	M	0,9
01 September 2018	64,5	1,9	F	0,64
01 September 2018	66	2,11	F	1,8
01 September 2018	67,5	2	M	0,8
01 September 2018	68	3,5	F	0,9
01 September 2018	69	1,9	F	0,7
01 September 2018	82	4	F	4,8
01 September 2018	82	4	F	7
01 September 2018	82,5	4,5	M	3,7
01 September 2018	84	4	F	6,2
01 September 2018	85	5	F	6,6
01 September 2018	85	7,7	M	1,3
01 September 2018	86	6,5	F	4,9
01 September 2018	86	7,5	M	1,7
01 September 2018	89	7	F	7
01 September 2018	89	6	F	5,1
01 September 2018	89	7	F	4,7

Handwritten signature and initials, possibly 'F' and 'ERU', located in the bottom right corner of the page.

01 September 2018	105	13	M	11,75
01 September 2018	106	15	F	18,7
01 September 2018	106	11	F	18,3
01 September 2018	106	11,5	F	26,6
01 September 2018	106	14	M	4,5
01 September 2018	106	14,5	M	7,4
01 September 2018	107	16	F	14,3
01 September 2018	107	11,5	F	16,2
01 September 2018	107	15	F	37,33
01 September 2018	107	14,5	M	7,4
01 September 2018	108	13,5	F	31,5
01 September 2018	108	15	F	15,2
01 September 2018	108	13	F	27,6
01 September 2018	108	15	M	10,53
01 September 2018	108	13,5	M	7,9
01 September 2018	108	14	M	4,5
01 September 2018	109	14	F	31,7
01 September 2018	109	16,5	M	11
01 September 2018	109	16	M	5,7
01 September 2018	109	14	M	12,2
01 September 2018	109	17,5	M	22,5
01 September 2018	110	15,5	F	11,7
01 September 2018	110	12	M	5,7
01 September 2018	110	13	M	9,5
01 September 2018	110	13	M	7,3
01 September 2018	110	15	M	5,7
01 September 2018	111	15	F	36,65
01 September 2018	111	16	F	29,4
01 September 2018	111	16	M	16,7
01 September 2018	112	16	F	33,33
01 September 2018	112	14,5	F	46
01 September 2018	112	15,5	F	51,3
01 September 2018	112	14,5	M	9,9
01 September 2018	112	15	M	13,72
01 September 2018	113	14,5	F	29,5
01 September 2018	113	15,5	F	32,1
01 September 2018	113	16	F	37,5
01 September 2018	113	16	F	41,4
01 September 2018	113	15,5	M	8,3
01 September 2018	113	14	M	11
01 September 2018	113	14	M	11,5
01 September 2018	113	16,5	M	6,6
01 September 2018	113	17	M	11,3
01 September 2018	113.5	14	M	8,4
01 September 2018	114	17	F	39,5
01 September 2018	114	17	F	30,58
01 September 2018	114	17	M	9,5
01 September 2018	115	16,5	F	42
01 September 2018	115	17	F	109
01 September 2018	115	18	M	17,4
01 September 2018	115.5	15	F	28
01 September 2018	115.5	19	F	46,7
01 September 2018	115.5	18	M	13,9
01 September 2018	116	17,5	M	22,9
01 September 2018	116	18,5	M	36
01 September 2018	117	19	F	36,3
01 September 2018	117	18,5	M	14,6
01 September 2018	117	19	M	15,29
01 September 2018	117	19	M	20,5
01 September 2018	118	18,5	F	43,37
01 September 2018	118	16,5	M	11
01 September 2018	118	19	M	19,7
01 September 2018	118	18	M	20,4
01 September 2018	118	18,5	M	15,5
01 September 2018	118	19	M	17,82
01 September 2018	119	16,5	F	48,8
01 September 2018	119	17	F	42,9
01 September 2018	119	18,5	F	50,21
01 September 2018	120	18	F	113
01 September 2018	120	20	M	24
01 September 2018	120	18	M	18,1
01 September 2018	120	18,5	M	16,5
01 September 2018	121	18	F	35

01 September 2018	90	7,5	M	2,27
01 September 2018	90	6,5	M	2,2
01 September 2018	90	7	M	2,5
01 September 2018	90	7	M	124
01 September 2018	90	8,8	M	3,1
01 September 2018	90,5	7,5	M	3,2
01 September 2018	91	7	M	3,74
01 September 2018	92	7,2	F	9,8
01 September 2018	92	8	M	4,2
01 September 2018	93	7	F	10,8
01 September 2018	93	7,5	F	10,5
01 September 2018	93	8	F	19,1
01 September 2018	93	7,5	M	4,2
01 September 2018	93	9	M	1,9
01 September 2018	94	8,5	F	11,3
01 September 2018	94	8,5	F	9,9
01 September 2018	94	8	M	5,5
01 September 2018	95	8,5	F	68,1
01 September 2018	95	9	F	10,7
01 September 2018	95	9	F	14,6
01 September 2018	95	7	F	7,4
01 September 2018	95	8	F	20,8
01 September 2018	95	9,5	M	5,1
01 September 2018	95	9	M	5,4
01 September 2018	96	8,5	F	83,2
01 September 2018	96	9	F	73,6
01 September 2018	96	7	F	9,6
01 September 2018	96	9,5	F	13,1
01 September 2018	96	10	F	16,5
01 September 2018	96	11	F	16,2
01 September 2018	96	8	M	3,13
01 September 2018	96	8,5	M	5,9
01 September 2018	96,5	8,5	F	9
01 September 2018	97	8	F	8,4
01 September 2018	97	10,5	F	10,8
01 September 2018	97	9	M	2,6
01 September 2018	97,5	9	M	3,8
01 September 2018	98	8	F	10,47
01 September 2018	98	9,5	F	12,1
01 September 2018	98	10,5	M	4,58
01 September 2018	98	9	M	3,2
01 September 2018	98	9	M	5,2
01 September 2018	98	11,5	M	5,3
01 September 2018	99	9	F	13
01 September 2018	99	8,5	F	19,7
01 September 2018	99	8	F	12,8
01 September 2018	99	10	F	17,2
01 September 2018	99	9,5	M	5,5
01 September 2018	99,5	10	F	15,9
01 September 2018	100	12	F	17,6
01 September 2018	100	9,5	F	14,4
01 September 2018	100	10	F	17,5
01 September 2018	100	10,5	M	2,4
01 September 2018	100,5	11,5	M	3,8
01 September 2018	101	13	F	14,4
01 September 2018	101	11,5	F	21,4
01 September 2018	101	11	F	16,5
01 September 2018	101	10	M	2,1
01 September 2018	101	10,5	M	6,6
01 September 2018	102	10	F	11,4
01 September 2018	102	10	F	25,9
01 September 2018	102	10,5	F	13
01 September 2018	102	10	M	4,1
01 September 2018	103,5	10,5	M	2,9
01 September 2018	104	14	F	81
01 September 2018	104	11	F	19,7
01 September 2018	104	13,5	M	9,3
01 September 2018	104,5	14,5	F	16,5
01 September 2018	105	14,5	F	26,8
01 September 2018	105	14	F	38,1
01 September 2018	105	14	M	10
01 September 2018	105	13,5	M	9,7
01 September 2018	105	10	M	4,8

01 September 2018	121	20	F	50,8
01 September 2018	121	20,5	F	47,4
01 September 2018	121	21	F	83
01 September 2018	121	20,5	M	
01 September 2018	122	21	F	16,5
01 September 2018	122	19,5	F	54,7
01 September 2018	122	20	F	55
01 September 2018	122	22,5	F	60
01 September 2018	122	20,5	M	22,6
01 September 2018	122	20	M	22,3
01 September 2018	122	20,5	M	29,8
01 September 2018	122	20,5	M	18,9
01 September 2018	122	24	M	33,8
01 September 2018	122,5	20,5	F	53,7
01 September 2018	122,5	24	M	12,5
01 September 2018	123	20,5	F	63,9
01 September 2018	123	21,5	M	16,8
01 September 2018	123	20,5	M	16,9
01 September 2018	123	21	M	11,1
01 September 2018	123	21	M	46,3
01 September 2018	124	16	F	29,08
01 September 2018	124	19,5	F	45,1
01 September 2018	124	21	F	51,4
01 September 2018	124	25,5	F	82
01 September 2018	124	22	M	14,4
01 September 2018	124	23	M	29,2
01 September 2018	124	23	M	19,9
01 September 2018	125	23,5	F	65,4
01 September 2018	125	22	F	90
01 September 2018	125	23,5	F	87
01 September 2018	125	23,5	F	48,8
01 September 2018	125	24,5	F	61,4
01 September 2018	125	20,5	M	33,33
01 September 2018	125	21	M	31,8
01 September 2018	125	21	M	47
01 September 2018	125	21	M	23,5
01 September 2018	125	22	M	29,1
01 September 2018	125	22	M	27,1
01 September 2018	125	23,5	M	24,1
01 September 2018	125,5	20	M	7,3
01 September 2018	126	22	F	75
01 September 2018	126	22	F	64
01 September 2018	126	23,5	F	63,5
01 September 2018	126	23,5	F	75,1
01 September 2018	126	23,5	F	68,2
01 September 2018	126	20	M	25,6
01 September 2018	126	22,5	M	30,5
01 September 2018	126	23	M	19,8
01 September 2018	127	19	M	9,22
01 September 2018	127	20	M	14,1
01 September 2018	127	23,5	M	15
01 September 2018	127	26	M	28,6
01 September 2018	128	19,5	F	56
01 September 2018	128	23	F	84
01 September 2018	128	24,5	F	73,1
01 September 2018	128	27	F	83,25
01 September 2018	128	27,5	F	50,7
01 September 2018	128	23	M	24,9
01 September 2018	128	23	M	13,2
01 September 2018	129	20,5	F	68,6
01 September 2018	129	26,5	F	102
01 September 2018	129	27	F	63,3
01 September 2018	129	24	M	24,71
01 September 2018	129,5	28	M	23
01 September 2018	130	23	F	57,49
01 September 2018	130	31	F	359
01 September 2018	130	20,5	M	20
01 September 2018	130	22,5	M	12,3
01 September 2018	130	22,5	M	18,7
01 September 2018	130	23	M	34,9
01 September 2018	130	26	M	29,9
01 September 2018	131	26,5	F	83,1
01 September 2018	131	27,5	F	96

Handwritten signatures and initials, including a large stylized signature and the initials 'RW'.

01 September 2018	131	21,5	M	24,4
01 September 2018	131	22	M	73,3
01 September 2018	131	25	M	30,93
01 September 2018	131	25,5	M	14,9
01 September 2018	132	29	F	50,7
01 September 2018	132	27,5	F	9,8
01 September 2018	132	26	F	90,9
01 September 2018	132	27	F	91
01 September 2018	132	28	M	23,8
01 September 2018	132	25,5	M	17,8
01 September 2018	132	27	M	22,7
01 September 2018	132	28,5	M	67,3
01 September 2018	133	28,5	F	108
01 September 2018	133	26	F	74
01 September 2018	133	26,5	F	104
01 September 2018	133	29	F	24,12
01 September 2018	133	23,5	M	28,44
01 September 2018	133	27	M	21,6
01 September 2018	134	29	F	49,5
01 September 2018	134	28	F	106
01 September 2018	134	28	F	112
01 September 2018	134	28,5	F	77
01 September 2018	134	30,5	F	86
01 September 2018	134	26	M	17,4
01 September 2018	134	27	M	14,4
01 September 2018	134	29,5	M	37,1
01 September 2018	134,5	24,5	M	24,2
01 September 2018	134,5	28,5	M	33,1
01 September 2018	135	22,5	F	66
01 September 2018	135	23	M	15,8
01 September 2018	135	23,5	M	19,4
01 September 2018	135	28	M	85,4
01 September 2018	135	34	M	35,9
01 September 2018	136	26,5	F	97
01 September 2018	136	28	F	77,36
01 September 2018	136	29,5	F	57,1
01 September 2018	136	31,5	F	151
01 September 2018	136	26,5	M	33,8
01 September 2018	137	32,5	F	148
01 September 2018	137	33	F	121
01 September 2018	137	33,5	M	30,82
01 September 2018	138	29	F	95
01 September 2018	138	33,5	F	105,02
01 September 2018	138	34,5	M	62,5
01 September 2018	138	29,5	M	32,9
01 September 2018	138	30	M	58
01 September 2018	138,5	31,5	M	43,8
01 September 2018	140	31	F	61,1
01 September 2018	140	31,5	F	99
01 September 2018	140	33	F	117
01 September 2018	140	36,5	F	675
01 September 2018	140	38	F	123
01 September 2018	140	35,5	M	61,28
01 September 2018	141	32,5	F	134
01 September 2018	141	34	F	95
01 September 2018	141	38,5	M	50,9
01 September 2018	142	29,5	F	84,9
01 September 2018	142	33,5	M	35
01 September 2018	142	34,5	M	45,8
01 September 2018	143	37	F	137
01 September 2018	143	40	F	78,9
01 September 2018	144	37,5	F	134
01 September 2018	144	31,5	M	42,9
01 September 2018	144	32	M	27,6
01 September 2018	145	37,5	F	155
01 September 2018	145	38	F	866
01 September 2018	145	36	M	36,3
01 September 2018	146	35	F	152
01 September 2018	146	37,5	F	183
01 September 2018	146	31,5	M	45
01 September 2018	146	38	M	52,6
01 September 2018	146,5	39,5	F	128,3
01 September 2018	147	34,5	F	103,1

01 September 2018	147	35,5	F	32,8
01 September 2018	147	43,5	F	226
01 September 2018	147	43	M	50
01 September 2018	147	32	M	50,2
01 September 2018	147	34,5	M	58
01 September 2018	147	35	M	25,1
01 September 2018	147	39	M	47,9
01 September 2018	149	37	M	36,5
01 September 2018	149	43	M	104
01 September 2018	149,5	40	M	44
01 September 2018	150	36,5	F	153
01 September 2018	150	35,5	M	40,31
01 September 2018	150,5	45	M	52,3
01 September 2018	151	37	F	308
01 September 2018	151	38,5	F	245
01 September 2018	151	39,5	F	223
01 September 2018	151	41	F	861
01 September 2018	152	34,5	F	124
01 September 2018	152	36	F	87
01 September 2018	152	36,5	M	65
01 September 2018	152	43,5	M	67
01 September 2018	154	37	F	425
01 September 2018	154	42,5	F	202
01 September 2018	154	43,5	F	488
01 September 2018	154	49,5	F	556
01 September 2018	155	50,5	F	346
01 September 2018	155	51	F	607
01 September 2018	155	54,5	M	30,8
01 September 2018	155	39,5	M	60
01 September 2018	156	40,5	F	356
01 September 2018	156	43	F	160
01 September 2018	156	35,5	M	62,4
01 September 2018	157	44	F	288
01 September 2018	157	44,4	F	200
01 September 2018	157	39	M	1,9
01 September 2018	157,5	40	F	300
01 September 2018	159	53	F	458
01 September 2018	159,5	46	F	1094
01 September 2018	160	48	M	79
01 September 2018	161	98,5	F	176
01 September 2018	162	46	F	206
01 September 2018	162	50,5	F	228
01 September 2018	162	51	F	245
01 September 2018	162	54	F	416
01 September 2018	162	58	M	88
01 September 2018	162	44,5	M	102
01 September 2018	162,5	60	F	359
01 September 2018	163	48,5	F	170
01 September 2018	163	49	F	572
01 September 2018	163	52	F	340
01 September 2018	163	53,5	F	258,4
01 September 2018	163	44,5	M	58,7
01 September 2018	163	52	M	56,1
01 September 2018	164	44	F	98,23
01 September 2018	164	54,5	M	60,7
01 September 2018	165	49	F	310
01 September 2018	166	40	F	224
01 September 2018	166	51	F	361
01 September 2018	168	51	F	614
01 September 2018	170	62	F	390
01 September 2018	170	64	F	470
01 September 2018	173	59	F	491
01 September 2018	173	62,5	F	448
01 September 2018	174	56	F	385
01 September 2018	174	55	M	56,8
01 September 2018	175	21,5	F	73
01 September 2018	176	67,5	F	430
01 September 2018	178	63,5	F	510
01 September 2018	178	61	M	98,1
01 September 2018	182	76	F	738
01 September 2018	182	83	F	346
01 September 2018	184	69	F	815
01 September 2018	186	76,5	F	778

01 September 2018	198	94	F	560
01 October 2018	60	1,5	F	2,23
01 October 2018	60	1,5	F	0,5
01 October 2018	60	1,5	F	1
01 October 2018	61	1,7	F	0,8
01 October 2018	61,5	2	F	0,7
01 October 2018	64,5	1,648	M	0,8
01 October 2018	65	2	F	0,9
01 October 2018	65	1,7	M	0,3
01 October 2018	65	2,41	M	0,5
01 October 2018	66,5	3	M	0,6
01 October 2018	68	3,5	F	1,1
01 October 2018	68,5	3	F	0,8
01 October 2018	70	3,7	M	0,44
01 October 2018	70,5	3,9	F	0,7
01 October 2018	70,5	1,8	M	0,1
01 October 2018	71,5	2,68	F	2,3
01 October 2018	72	3,5	M	0,2
01 October 2018	72,5	3,8	M	0,5
01 October 2018	73	3,5	F	0,4
01 October 2018	73	3	F	0,9
01 October 2018	74,5	3,195	M	0,7
01 October 2018	78	3,5	F	1,7
01 October 2018	80	4	M	1,4
01 October 2018	84	5,5	F	9,3
01 October 2018	87	6,5	F	5,5
01 October 2018	87	7	F	8,7
01 October 2018	88	6	M	2,5
01 October 2018	89	7	F	10,6
01 October 2018	90,5	7	F	10
01 October 2018	90,5	7	M	3,3
01 October 2018	91	6	F	10,4
01 October 2018	91	6	F	9,1
01 October 2018	92	8	M	1,8
01 October 2018	92	6,5	M	2,6
01 October 2018	93	7	F	13,4
01 October 2018	93	7,5	F	8,3
01 October 2018	93	8	F	11,5
01 October 2018	93	8,5	M	4,6
01 October 2018	94	7,5	F	13,21
01 October 2018	94,5	9	M	4,7
01 October 2018	95	8	F	9,5
01 October 2018	96	9	F	13,2
01 October 2018	96	10	M	5,3
01 October 2018	97	10,5	F	16,3
01 October 2018	97	11,5	F	21,1
01 October 2018	97	9,5	M	5,76
01 October 2018	97	9,5	M	3,2
01 October 2018	97	9	M	4,2
01 October 2018	97	10	M	2,7
01 October 2018	98	10,5	F	20,9
01 October 2018	98	8	M	5
01 October 2018	98	9	M	3,8
01 October 2018	98	9	M	3,6
01 October 2018	98,5	11,5	F	22,6
01 October 2018	99	9,5	F	10,5
01 October 2018	99	10	M	3,6
01 October 2018	100	10,5	F	13,6
01 October 2018	100	11	M	3,4
01 October 2018	100	9,5	M	3,5
01 October 2018	101	10	M	5,8
01 October 2018	101	10,5	M	8
01 October 2018	101	11	M	2,7
01 October 2018	102	12,5	F	17,2
01 October 2018	102	12	F	13,6
01 October 2018	103	11,5	F	17,2
01 October 2018	105	15,5	F	21,6
01 October 2018	105	12,5	F	16
01 October 2018	105	7	M	2,7
01 October 2018	105	13	M	6,3
01 October 2018	106	11	F	16,4
01 October 2018	106	13	F	18
01 October 2018	106,5	11	F	13,2

Handwritten signature and initials, possibly 'R' and 'AC', located in the bottom right corner of the page.

01 October 2018	107	15,5	M	4,8
01 October 2018	107	13	M	3,4
01 October 2018	108	12	F	19,6
01 October 2018	108	14,5	F	22,2
01 October 2018	108	11,5	M	13,1
01 October 2018	109	15,5	F	28,2
01 October 2018	109	14	F	19,2
01 October 2018	109	16	M	3,8
01 October 2018	109	14	M	12,2
01 October 2018	110	15,5	F	25
01 October 2018	111	15,5	F	21,3
01 October 2018	111	14,5	F	32,9
01 October 2018	112	15	F	24,1
01 October 2018	112	14,5	M	10
01 October 2018	112	13	M	7,7
01 October 2018	112	14,5	M	9
01 October 2018	112	14,5	M	27,5
01 October 2018	112	15,5	M	23,2
01 October 2018	112	17,5	M	14,7
01 October 2018	112,5	15,5	M	13,1
01 October 2018	113	16,5	F	39
01 October 2018	113,5	18	M	9,4
01 October 2018	114	16,5	M	16,8
01 October 2018	114	17	M	14,1
01 October 2018	115	19	F	50,7
01 October 2018	115	18	M	12,7
01 October 2018	116	16	F	61,2
01 October 2018	116	17,5	F	44,4
01 October 2018	116	18	F	54,5
01 October 2018	116	19	F	30,6
01 October 2018	116	19	M	13,8
01 October 2018	117	14	F	25,9
01 October 2018	118	20,5	F	13,6
01 October 2018	118	21	F	54,5
01 October 2018	118	18,5	M	13
01 October 2018	119	17,5	M	15,2
01 October 2018	119	18	M	8,9
01 October 2018	120	18	F	52,1
01 October 2018	120	18	F	41,6
01 October 2018	120	18,5	F	52,9
01 October 2018	120	22,5	F	70,7
01 October 2018	120	19	M	19,1
01 October 2018	120	19,5	M	23,9
01 October 2018	120	20	M	12,9
01 October 2018	120,5	20	F	50,6
01 October 2018	121	17,5	F	56
01 October 2018	121,5	25	F	38,9
01 October 2018	122	23,5	M	17,9
01 October 2018	123	19,5	F	25,5
01 October 2018	123	20	F	61,6
01 October 2018	123	20,5	F	46,3
01 October 2018	123	21	F	46,3
01 October 2018	123	22,5	F	54
01 October 2018	123	23	F	66,7
01 October 2018	123	22,5	M	3,1
01 October 2018	123	22,5	M	11,8
01 October 2018	123	22,5	M	6,8
01 October 2018	123	24	M	25
01 October 2018	124	21,5	M	11,5
01 October 2018	124	22	M	8,4
01 October 2018	125	21	F	24
01 October 2018	125	21,5	F	69,2
01 October 2018	125	23	F	60
01 October 2018	125	23,5	F	67
01 October 2018	125	24	F	61,7
01 October 2018	125	20,5	M	24,3
01 October 2018	125	23	M	19,2
01 October 2018	125	23,5	M	22,9
01 October 2018	127	21,5	F	14,7
01 October 2018	127	22	F	43,2
01 October 2018	127	25	F	37
01 October 2018	127	23,5	M	13,1
01 October 2018	127	26	M	30,5

01 October 2018	127,5	28,5	F	92
01 October 2018	128	17,5	F	54,1
01 October 2018	128	24	F	18,8
01 October 2018	128	20,5	M	22,2
01 October 2018	129	27	F	81
01 October 2018	130	25,5	F	61,8
01 October 2018	131	26	F	64,8
01 October 2018	131	28	F	93,1
01 October 2018	131,5	29	F	77,8
01 October 2018	132	25,5	M	17,7
01 October 2018	133	29	F	68,1
01 October 2018	133	24,5	M	20,5
01 October 2018	133	27,5	M	30,4
01 October 2018	135	27	M	25,2
01 October 2018	135	28,5	M	19,9
01 October 2018	136	34	F	91
01 October 2018	136	34,5	F	112
01 October 2018	136	29	M	19,9
01 October 2018	137	23,5	F	72,9
01 October 2018	137	27	F	106,6
01 October 2018	137	29,5	F	85,5
01 October 2018	137	35,5	M	32,2
01 October 2018	137,5	28	M	43,6
01 October 2018	138	24,5	M	23,2
01 October 2018	139	27,5	M	24,3
01 October 2018	140	32	M	41,8
01 October 2018	141	29	F	67,7
01 October 2018	141	32	F	133,2
01 October 2018	141	36	F	194
01 October 2018	141	30	M	33,3
01 October 2018	142	34,5	M	42,3
01 October 2018	144	34	M	37,5
01 October 2018	145	34,5	F	136
01 October 2018	145	37	F	209
01 October 2018	146	30	F	130
01 October 2018	146	35	F	154,4
01 October 2018	146	37,5	F	167,1
01 October 2018	146	37	M	46,3
01 October 2018	147	43	F	165
01 October 2018	149,5	41,5	F	2199
01 October 2018	150	41	F	131
01 October 2018	151	32,5	F	103,7
01 October 2018	154,5	40	M	54,6
01 October 2018	157	48,5	F	348
01 October 2018	160	47,5	F	234
01 October 2018	160	47,5	F	307
01 October 2018	160	49	F	41,1
01 October 2018	160	50	F	515
01 October 2018	163	50	F	397
01 October 2018	163	52,5	F	280
01 October 2018	163	52,5	M	11,7
01 October 2018	164	60,5	M	180
01 October 2018	168	55,5	M	69,5
01 October 2018	169	49,5	F	380
01 October 2018	170	62,5	F	566
01 November 2018	58,5	0,9	F	0,3
01 November 2018	62	1,2	F	0,5
01 November 2018	62	1,3	F	0,5
01 November 2018	66	3,5	F	0,2
01 November 2018	67	3,5	F	0,3
01 November 2018	68,5	2,3	M	0,4
01 November 2018	71	4	F	1,9
01 November 2018	72	3,8	M	0,8
01 November 2018	73	3,2	M	0,6
01 November 2018	74	3	M	0,2
01 November 2018	76	3,5	F	2,3
01 November 2018	86,5	5	M	1,8
01 November 2018	90	7,5	M	2,1
01 November 2018	92	8	F	15,3
01 November 2018	93	7,5	F	15,5
01 November 2018	93	8,5	M	5,3
01 November 2018	94	8	F	11,7
01 November 2018	95	8,5	F	9,5

01 November 2018	95	9,5	M	1,9
01 November 2018	95	7,5	M	2
01 November 2018	95	8,5	M	3,9
01 November 2018	96	8,5	M	4,9
01 November 2018	96	9,5	M	3,1
01 November 2018	96	8	M	3
01 November 2018	96	9,5	M	3,8
01 November 2018	97	9,5	F	9,6
01 November 2018	97	10	F	16,1
01 November 2018	97	10,5	F	15,5
01 November 2018	98	9	F	14
01 November 2018	99	10	M	3,7
01 November 2018	99	10,5	M	3,3
01 November 2018	101	10	F	13,9
01 November 2018	101	12,5	M	8,8
01 November 2018	102	11,5	F	19,4
01 November 2018	102	9,5	M	4,8
01 November 2018	102	11,5	M	1,8
01 November 2018	103	12,5	F	18
01 November 2018	103	11,5	F	22,6
01 November 2018	103	12,5	F	19,3
01 November 2018	103	11,5	M	4,4
01 November 2018	103	12,5	M	8,1
01 November 2018	104	14,5	F	18,3
01 November 2018	104	9,5	F	14,4
01 November 2018	104	12	F	22,4
01 November 2018	104	12	F	21,8
01 November 2018	104	13	M	3,8
01 November 2018	105	12	F	13,8
01 November 2018	107	12,5	M	5,5
01 November 2018	107	14,5	M	9,5
01 November 2018	107	15	M	6,5
01 November 2018	109	12,5	F	31,8
01 November 2018	110	15,5	F	21
01 November 2018	110	13	M	8,9
01 November 2018	110,5	12	F	26,8
01 November 2018	112	16	F	59,8
01 November 2018	112	16	M	7,9
01 November 2018	112	17	M	10,2
01 November 2018	114	18	F	45,9
01 November 2018	114	14,5	M	6,3
01 November 2018	114,5	15,5	F	35,2
01 November 2018	115	16	F	32,1
01 November 2018	116	17	F	57,1
01 November 2018	117	17,5	F	49,8
01 November 2018	118	18	M	11,9
01 November 2018	120	21	F	69,9
01 November 2018	120,5	19	M	15,6
01 November 2018	121	19	F	48,9
01 November 2018	122	17	F	43,3
01 November 2018	122	20	M	16,7
01 November 2018	122,5	20,5	M	10,4
01 November 2018	123	20	F	48,9
01 November 2018	124	21	M	20
01 November 2018	125,5	20	M	23,6
01 November 2018	127	21	F	58,3
01 November 2018	127	26,5	M	18
01 November 2018	130	23	M	16
01 November 2018	130	26	M	34
01 November 2018	131	25	M	22,7
01 November 2018	133	23	M	24,9
01 November 2018	135	27	M	25,7
01 November 2018	135	30	M	69,2
01 November 2018	143	32,5	M	18,3
01 November 2018	144	38,5	F	230
01 November 2018	145	38	M	24,1
01 November 2018	147	35	M	26,9
01 November 2018	147,5	38	F	421
01 November 2018	148	40	F	131
01 November 2018	150	41	F	331
01 November 2018	158	49	M	72,9
01 November 2018	158,5	49	F	157
01 November 2018	160	45,5	F	218

01 November 2018	170	63	M	106,1
01 December 2018	73	3,5	F	1,5
01 December 2018	79	4	F	3,7
01 December 2018	94	8,5	F	12,7
01 December 2018	98	9,5	F	17,1
01 December 2018	98	10,5	M	5,7
01 December 2018	103	11	F	18,1
01 December 2018	105,5	12	F	24,6
01 December 2018	106	12,5	F	31,4
01 December 2018	109	12	M	7,4
01 December 2018	116	18	F	28,7
01 December 2018	118	18,5	M	10,7
01 December 2018	124,5	23,5	F	49,1
01 December 2018	127	24	F	62,8
01 December 2018	130	25	F	54,3
01 December 2018	132,5	23,5	M	30,4
01 December 2018	141	36,5	F	77,4
01 December 2018	152	41,5	F	26,6

Handwritten signatures and initials in the bottom right corner of the page.

ALLEGATO N° 2

Data	Barca	Cale	N° Ami	Specie	Numero	Lunghezza (cm)	Peso (kg)
Giornata 1	Barca 1	1	730	Specie A	1	173	54,5
				Specie A	1	98	10,5
				Specie A	1	130	26
				Specie A	1	115	17
				Specie A	1	142	33
				Specie A	1	110	13
				Specie A	1	133	35
				Specie A	1	87	-
				Specie A	1	151	34,5
	Barca 2	1	780	Specie A	1	162	53
				Specie A	1	134	28
				Specie A	1	127	25,5
				Specie A	1	124	22,5
				Specie A	1	121	20
				Specie A	1	116	13,5
				Specie A	1	140	31
				Specie A	1	123	22
				Specie A	1	125	22
Barca 3	1	800	Specie A	1	121	17,5	
			Specie A	1	110	12	
			Specie A	1	119	18,5	
Giornata 2	Barca 1	1	850	Specie A	1	114	16,5
				Specie A	1	99	-
				Specie A	1	138	30,5
				Specie A	1	150	43
				Specie A	1	133	28
				Specie A	1	136	34
				Specie A	1	121	25,5
				Specie A	1	124	25
				Specie A	1	122	19
	Barca 2	1	850	Specie A	1	121	21,5
				Specie A	1	121	20,5
				Specie A	1	132	-
				Specie A	1	161	51,5
				Specie A	1	153	41,5
				Specie A	1	145	40
				Specie A	1	93	7
				Specie A	1	104	13,5
				Specie A	1	99	8,5
Barca 3	1	750	Specie A	1	109	14	
			Specie A	1	120	22,5	
			Specie A	1	126	27	
			Specie A	1	132	-	
			Specie A	1	152	-	
			Specie A	1	116	-	
			Specie A	1	129	-	
			Specie A	1	131	-	
			Specie A	1	126	-	
Giornata 3	Barca 1	1	750	Specie A	1	118	-
				Specie A	1	87	-
				Specie A	1	89	-
				Specie A	1	84	-
				Specie A	1	94	-
				Specie A	1	101	-
				Specie A	1	135	-
				Specie A	1	130	27
				Specie A	1	132	27
	Barca 2	1	750	Specie A	1	125	22,5
				Specie A	1	136	31
				Specie A	1	143	36,5
				Specie A	1	124	20
				Specie A	1	103	10
				Specie A	1	140	32,5
				Specie A	1	121	22
				Specie A	1	181	73,5
				Specie A	1	150	38
Barca 3	1	750	Specie A	1	148	39,5	
			Specie A	1	141	31,5	
			Specie A	1	153	41,5	
			Specie A	1	139	30	
			Specie A	1	135	30	

			<i>Specie A</i>	1	115	15	
			<i>Specie A</i>	1	119	18	
			<i>Specie A</i>	1	113	15,5	
			<i>Specie A</i>	1	117	16	
			<i>Specie A</i>	1	119	15,5	
			<i>Specie A</i>	1	110	14	
			<i>Specie A</i>	1	109	12	
			<i>Specie A</i>	1	110	10,5	
	Barca 3	1	950	<i>Specie A</i>	1	137	34,5
				<i>Specie A</i>	1	143	38,5
				<i>Specie A</i>	1	137	29
				<i>Specie A</i>	1	126	19
				<i>Specie A</i>	1	101	11
				<i>Specie A</i>	1	122	18,5
				<i>Specie A</i>	1	90	-
				<i>Specie A</i>	1	87	-
				<i>Specie A</i>	1	86	-
				<i>Specie A</i>	1	87	-
	Barca 4	1	830	<i>Specie A</i>	1	-	22,5
				<i>Specie A</i>	1	-	13
				<i>Specie A</i>	1	-	20,5
				<i>Specie A</i>	1	-	24
				<i>Specie A</i>	1	-	11,5
				<i>Specie A</i>	1	-	26
				<i>Specie A</i>	1	-	14
				<i>Specie A</i>	1	-	30,5
				<i>Specie A</i>	1	-	91
				<i>Specie A</i>	1	-	88
	Barca 5	1	960	<i>Specie A</i>	1	172	-
				<i>Specie A</i>	1	128	-
				<i>Specie A</i>	1	94	-
				<i>Specie A</i>	1	123	-
				<i>Specie A</i>	1	105	-
				<i>Specie A</i>	1	116	-
				<i>Specie A</i>	1	142	-
				<i>Specie A</i>	1	116	-
				<i>Specie A</i>	1	91	-
				<i>Specie A</i>	1	90	-
	Barca 6	1	680	<i>Specie A</i>	1	114	17
				<i>Specie A</i>	1	128	22
				<i>Specie A</i>	1	128	22
				<i>Specie A</i>	1	122	22,5
				<i>Specie A</i>	1	130	27
				<i>Specie A</i>	1	132	-
Giornata 4	Barca 1	1	930	<i>Specie A</i>	1	124	24
				<i>Specie A</i>	1	116	18,5
				<i>Specie A</i>	1	97	6
				<i>Specie A</i>	1	98	10
				<i>Specie A</i>	1	122	22
				<i>Specie A</i>	1	161	40,5
				<i>Specie A</i>	1	121	18,5
				<i>Specie A</i>	1	89	-
				<i>Specie A</i>	1	87	-
				<i>Specie A</i>	1	85	-
	Barca 2	1	850	<i>Specie A</i>	1	122	19
				<i>Specie A</i>	1	137	25,5
				<i>Specie A</i>	1	143	36
				<i>Specie A</i>	1	166	55,5
				<i>Specie A</i>	1	86	-
				<i>Specie A</i>	1	89	-
				<i>Specie A</i>	1	130	-
	Barca 3	1	700	<i>Specie A</i>	1	117	18,5
				<i>Specie A</i>	1	127	22
				<i>Specie A</i>	1	122	21,5
				<i>Specie A</i>	1	117	20,5
	Barca 4	1	820	<i>Specie A</i>	1	114	15
				<i>Specie A</i>	1	144	34
				<i>Specie A</i>	1	151	38,5
				<i>Specie A</i>	1	99	7,5
				<i>Specie A</i>	1	96	7,5
				<i>Specie A</i>	1	90	6,5
				<i>Specie A</i>	1	91	6
				<i>Specie A</i>	1	89	-

Giornata 5	Barca 5	1	830	Specie A	1	134	28,5		
				Specie A	1	124	22,5		
				Specie A	1	116	15		
				Specie A	1	109	12,5		
				Specie A	1	108	11		
				Specie A	1	159	45		
	Barca 6	1	770	Specie A	1	150	43		
				Specie A	1	118	16,5		
				Specie A	1	133	34		
				Specie A	1	155	48		
				Specie A	1	97	8,5		
				Specie A	1	99	9		
				Specie A	1	151	40,5		
				Specie A	1	128	25,5		
				Specie A	1	125	22		
				Specie A	1	132	27		
				Specie A	1	121	21,5		
				Specie A	1	121	22		
				Specie A	1	138	40,5		
				Specie A	1	121	15,5		
Barca 1	1	850	Specie A	1	86	-			
			Specie A	1	139	31,5			
			Specie A	1	90	-			
			Specie A	1	120	-			
			Specie A	1	114	-			
			Barca 2	1	940	Specie A	1	93	6
						Specie A	1	91	7,5
						Specie A	1	127	21,5
						Specie A	1	158	45,5
						Specie A	1	86	-
						Specie A	1	88	-
			Barca 3	1	840	Specie A	1	127	20,5
Specie A	1	104				13			
Specie A	1	93				7			
Specie A	1	91				7			
Specie A	1	116				17,5			
Specie A	1	162				45			
Specie A	1	83				-			
Specie A	1	89				-			
Barca 4	1	810	Specie A	1	118	19,5			
			Specie A	1	149	38,5			
			Specie A	1	146	38,5			
			Specie A	1	115	16			
			Specie A	1	96	-			
			Specie A	1	90	-			
Barca 5	1	820	Specie A	1	133	25			
			Specie A	1	158	45			
			Specie A	1	131	28,5			
			Specie A	1	134	33,5			
			Specie A	1	115	19			
			Specie A	1	107	14,5			
Barca 6	1	760	Specie A	1	127	24,5			
			Specie A	1	126	24,5			
			Specie A	1	117	14,5			
			Specie A	1	135	28,5			
			Specie A	1	126	21			
			Specie A	1	140	29,5			
			Specie A	1	118	-			
			Specie A	1	102	-			
			Specie A	1	141	29			
			Specie A	1	99	10			
Barca 2	1	850	Specie A	1	137	30,5			
			Specie A	1	122	20,5			
			Specie A	1	169	58			
			Specie A	1	113	17			
			Specie A	1	94	-			
			Specie A	1	82	-			
			Specie A	1	143	-			
			Specie A	1	124	-			
			Specie A	1	115	-			
			Specie A	1	121	-			
			Barca 3	1	750	Specie A	1	139	30,5
						Specie A	1	133	28

			<i>Specie A</i>	1	127	23,5
			<i>Specie A</i>	1	92	6
			<i>Specie A</i>	1	95	6,5
			<i>Specie A</i>	1	100	8
	Barca 4	1	830	<i>Specie A</i>	1	18,5
				<i>Specie A</i>	1	26
				<i>Specie A</i>	1	94
				<i>Specie A</i>	1	89
				<i>Specie A</i>	1	86
				<i>Specie A</i>	1	92
	Barca 5	1	1400	<i>Specie A</i>	1	22
				<i>Specie A</i>	1	26
				<i>Specie A</i>	1	22
				<i>Specie A</i>	1	34
				<i>Specie A</i>	1	24,5
				<i>Specie A</i>	1	21,5
				<i>Specie A</i>	1	9
				<i>Specie A</i>	1	6
				<i>Specie A</i>	1	13
				<i>Specie A</i>	1	12
				<i>Specie A</i>	1	10
	Barca 6	1	890	<i>Specie A</i>	1	8
				<i>Specie A</i>	1	22
				<i>Specie A</i>	1	17
				<i>Specie A</i>	1	34
				<i>Specie A</i>	1	26
				<i>Specie A</i>	1	24
				<i>Specie A</i>	1	26
				<i>Specie A</i>	1	9
				<i>Specie A</i>	1	6
Giornata 7	Barca 1	1	930	<i>Specie A</i>	1	55
				<i>Specie A</i>	1	50
				<i>Specie A</i>	1	26,5
				<i>Specie A</i>	1	17,5
				<i>Specie A</i>	1	16,5
				<i>Specie A</i>	1	19
				<i>Specie A</i>	1	6,5
				<i>Specie A</i>	1	7,5
				<i>Specie A</i>	1	6,5
				<i>Specie A</i>	1	13,5
				<i>Specie A</i>	1	30,5
				<i>Specie A</i>	1	31
				<i>Specie A</i>	1	15
				<i>Specie A</i>	1	11,5
				<i>Specie A</i>	1	44
				<i>Specie A</i>	1	20,5
				<i>Specie A</i>	1	28
				<i>Specie A</i>	1	-
	Barca 2	1	1510	<i>Specie A</i>	1	75
				<i>Specie A</i>	1	55
				<i>Specie A</i>	1	36
				<i>Specie A</i>	1	25
				<i>Specie A</i>	1	27,5
				<i>Specie A</i>	1	26,5
				<i>Specie A</i>	1	15
				<i>Specie A</i>	1	18,5
				<i>Specie A</i>	1	16
				<i>Specie A</i>	1	19
				<i>Specie A</i>	1	19
				<i>Specie A</i>	1	7
				<i>Specie A</i>	1	9,5
				<i>Specie A</i>	1	11,5
				<i>Specie A</i>	1	12
				<i>Specie A</i>	1	13,5
				<i>Specie A</i>	1	17
				<i>Specie A</i>	1	29
				<i>Specie A</i>	1	-
	Barca 3	1	890	<i>Specie A</i>	1	65,5
				<i>Specie A</i>	1	47
				<i>Specie A</i>	1	38,5
				<i>Specie A</i>	1	43,5
				<i>Specie A</i>	1	20
				<i>Specie A</i>	1	17,5

			<i>Specie A</i>	1	98	9,5	
			<i>Specie A</i>	1	96	-	
			<i>Specie A</i>	1	127	-	
			<i>Specie A</i>	1	96	-	
			<i>Specie A</i>	1	87	-	
			<i>Specie A</i>	1	113	-	
			<i>Specie A</i>	1	105	-	
			<i>Specie A</i>	1	110	-	
	Barca 4	1	960	<i>Specie A</i>	1	100	13
				<i>Specie A</i>	1	131	23,5
				<i>Specie A</i>	1	127	24
				<i>Specie A</i>	1	121	20
				<i>Specie A</i>	1	134	24,5
				<i>Specie A</i>	1	135	31
				<i>Specie A</i>	1	120	19,5
				<i>Specie A</i>	1	125	22
				<i>Specie A</i>	1	95	7,5
				<i>Specie A</i>	1	145	37
				<i>Specie A</i>	1	126	23,5
				<i>Specie A</i>	1	130	25
				<i>Specie A</i>	1	118	19
				<i>Specie A</i>	1	105	15
				<i>Specie A</i>	1	128	22,5
				<i>Specie A</i>	1	114	15,5
				<i>Specie A</i>	1	142	32,5
				<i>Specie A</i>	1	130	27
				<i>Specie A</i>	1	116	19
	Barca 5	1	650	<i>Specie A</i>	1	132	26
				<i>Specie A</i>	1	118	17
				<i>Specie A</i>	1	108	13
				<i>Specie A</i>	1	158	-
				<i>Specie A</i>	1	130	22,5
				<i>Specie A</i>	1	121	18
	Barca 6	1	880	<i>Specie A</i>	1	113	16
				<i>Specie A</i>	1	-	8
				<i>Specie A</i>	1	-	24
				<i>Specie A</i>	1	-	14
				<i>Specie A</i>	1	-	19,5
				<i>Specie A</i>	1	-	20
				<i>Specie A</i>	1	-	46,5
				<i>Specie A</i>	1	-	56,5
				<i>Specie A</i>	1	-	27,5
				<i>Specie A</i>	1	-	7,5
				<i>Specie A</i>	1	-	6,5
				<i>Specie A</i>	1	-	8
Giornata 8	Barca 1	1	770	<i>Specie A</i>	1	-	52
				<i>Specie A</i>	1	-	42,5
				<i>Specie A</i>	1	-	35,5
				<i>Specie A</i>	1	-	21
				<i>Specie A</i>	1	-	16
				<i>Specie A</i>	1	-	13,5
				<i>Specie A</i>	1	101	-
				<i>Specie A</i>	1	98	-
				<i>Specie A</i>	1	97	-
	Barca 2	1	800	<i>Specie A</i>	1	-	20
				<i>Specie A</i>	1	-	31
				<i>Specie A</i>	1	-	55
				<i>Specie A</i>	1	-	46
				<i>Specie A</i>	1	-	44
				<i>Specie A</i>	1	-	18
				<i>Specie A</i>	1	-	23
				<i>Specie A</i>	1	-	15
				<i>Specie A</i>	1	-	18
				<i>Specie A</i>	1	-	21
	Barca 3	1	1500	<i>Specie A</i>	1	-	8
				<i>Specie A</i>	1	-	36,5
				<i>Specie A</i>	1	-	24,5
				<i>Specie A</i>	1	-	28,5
				<i>Specie A</i>	1	-	24
				<i>Specie A</i>	1	-	16,5
				<i>Specie A</i>	1	-	28,5
				<i>Specie A</i>	1	-	20,5
				<i>Specie A</i>	1	-	25,5

Handwritten signature and initials, possibly 'RAU', located at the bottom right of the page.

				Specie A	1	-	31,5
				Specie A	1	-	22
				Specie A	1	-	20
				Specie A	1	-	31
				Specie A	1	-	15
				Specie A	1	-	24
				Specie A	1	-	17,5
				Specie A	1	-	47
				Specie A	1	-	29,5
				Specie A	1	-	76
	Barca 4	1	1400	Specie A	1	163	50,5
				Specie A	1	134	27
				Specie A	1	164	46
				Specie A	1	132	25
				Specie A	1	90	7
				Specie A	1	98	8
				Specie A	1	124	-
				Specie A	1	110	-
				Specie A	1	121	-
				Specie A	1	130	-
				Specie A	1	103	-
	Barca 5	1	960	Specie A	1	160	50
				Specie A	1	127	26
				Specie A	1	113	16
				Specie A	1	134	30
				Specie A	1	117	19,5
				Specie A	1	122	24
				Specie A	1	112	16
				Specie A	1	104	12,5
				Specie A	1	101	11
	Barca 6	1	820	Specie A	1	152	39
				Specie A	1	158	45,5
				Specie A	1	128	24
				Specie A	1	102	12,5
				Specie A	1	124	22
				Specie A	1	96	-
				Specie A	1	130	-
				Specie A	1	121	-
				Specie A	1	115	-
Giornata 9	Barca 1	1	850	Specie A	1	168	64
				Specie A	1	98	8
				Specie A	1	91	7
				Specie A	1	127	23
				Specie A	1	130	26
				Specie A	1	127	23
				Specie A	1	150	35,5
				Specie A	1	105	11
				Specie A	1	88	-
				Specie A	1	139	29,5
				Specie A	1	91	6,5
				Specie A	1	93	6,5
				Specie A	1	153	40,5
				Specie A	1	129	21,5
				Specie A	1	147	40
				Specie A	1	156	44
	Barca 2	1	760	Specie A	1	-	20
				Specie A	1	-	32
				Specie A	1	-	20
				Specie A	1	-	32
				Specie A	1	-	44,5
				Specie A	1	-	9
				Specie A	1	-	46
				Specie A	1	-	37,5
				Specie A	1	-	13
				Specie A	1	-	26
				Specie A	1	-	28,5
				Specie A	1	-	27,5
				Specie A	1	-	94
	Barca 3	1	830	Specie A	1	-	25
				Specie A	1	-	17
				Specie A	1	-	25,5
				Specie A	1	-	18
				Specie A	1	-	11

Handwritten signature and initials, possibly 'US' and 'RW', located at the bottom right of the page.

Giornata 10	Barca 4	1	680	Specie A	1	-	21
				Specie A	1	-	17,5
				Specie A	1	-	20
				Specie A	1	-	18,5
				Specie A	1	-	30
				Specie A	1	-	13
	Barca 1	1	850	Specie A	1	131	-
				Specie A	1	120	-
				Specie A	1	114	-
				Specie A	1	91	-
				Specie A	1	94	-
				Specie A	1	92	-
				Specie A	1	94	-
				Specie A	1	110	-
				Specie A	1	118	-
				Specie A	1	120	-
	Barca 2	1	950	Specie A	1	110	15,5
				Specie A	1	120	20
				Specie A	1	126	25
				Specie A	1	146	41
				Specie A	1	120	20,5
				Specie A	1	125	23
				Specie A	1	146	34,5
				Specie A	1	133	27,5
				Specie A	1	157	41,5
				Specie A	1	161	50,5
				Specie A	1	94	8
				Specie A	1	135	28
				Specie A	1	129	27
				Specie A	1	119	19,5
				Specie A	1	126	25,5
	Barca 3	1	760	Specie A	1	136	30
				Specie A	1	115	14,5
				Specie A	1	124	21,5
				Specie A	1	105	14,5
				Specie A	1	128	26
				Specie A	1	157	39,5
				Specie A	1	105	10,5
	Barca 4	1	1650	Specie A	1	147	37
				Specie A	1	124	20,5
				Specie A	1	130	25
				Specie A	1	106	15
			Specie A	1	125	20	
			Specie A	1	148	37	
			Specie A	1	146	36,5	
			Specie A	1	129	24,5	
			Specie A	1	107	15,5	
			Specie A	1	126	21	
			Specie A	1	107	12	
			Specie A	1	91	9	
			Specie A	1	173	57	
			Specie A	1	174	54,5	
			Specie A	1	148	38	
			Specie A	1	165	47,5	
			Specie A	1	136	34	
			Specie A	1	126	21	
			Specie A	1	158	34,5	
			Specie A	1	128	-	
			Specie A	1	128	-	
			Specie A	1	86	-	
			Specie A	1	119	-	
Barca 5	1	880	Specie A	1	134	26,5	
			Specie A	1	126	25,5	
			Specie A	1	160	45,5	
			Specie A	1	132	26,5	
Barca 6	1	760	Specie A	1	108	15,5	
			Specie A	1	136	25,5	
			Specie A	1	130	24,5	
			Specie A	1	121	21,5	
			Specie A	1	130	25	
			Specie A	1	140	-	
			Specie A	1	128	23	
			Specie A	1	133	28	

Giornata 11	Barca 1	1	850	Specie A	1	123	18,5			
				Specie A	1	174	62,5			
				Specie A	1	165	52			
				Specie A	1	154	41,5			
				Specie A	1	101	-			
				Specie A	1	-	34,5			
				Specie A	1	-	27,5			
				Specie A	1	-	11,5			
				Specie A	1	-	18,5			
				Specie A	1	-	31			
				Specie A	1	-	20			
				Barca 2	1	840	Specie A	1	-	40
							Specie A	1	-	11,5
							Specie A	1	-	46
							Specie A	1	-	39,5
	Specie A	1	-				17,5			
	Specie A	1	-				30			
	Specie A	1	116				-			
	Specie A	1	117				-			
	Specie A	1	126				-			
	Barca 3	1	1050				Specie A	1	105	13,5
							Specie A	1	116	13,5
							Specie A	1	90	7
							Specie A	1	91	8
							Specie A	1	100	11
							Specie A	1	89	7
				Specie A	1	130	27			
				Specie A	1	144	34,5			
				Specie A	1	140	31,5			
				Specie A	1	119	15			
				Specie A	1	139	30,5			
				Specie A	1	136	28,5			
				Specie A	1	108	13			
				Specie A	1	140	35			
				Specie A	1	121	19			
	Specie A	1	126	20,5						
	Specie A	1	128	20						
	Specie A	1	148	40						
	Specie A	1	170	51						
	Specie A	1	122	19,5						
	Specie A	1	136	-						
	Specie A	1	118	-						
	Specie A	1	98	-						
	Barca 4	1	1750	Specie A	1	104	-			
				Specie A	1	124	21			
Specie A				1	108	11,5				
Specie A				1	109	12				
Specie A				1	118	16				
Specie A				1	144	32				
Specie A				1	140	33				
Specie A				1	92	6,5				
Specie A				1	157	43				
Specie A				1	96	8				
Specie A				1	95	9,5				
Specie A				1	117	17				
Specie A				1	119	19				
Specie A				1	112	16,5				
Specie A				1	111	16,5				
Specie A	1	126	21,5							
Specie A	1	123	18,5							
Specie A	1	124	25							
Specie A	1	128	23							
Specie A	1	133	25							
Barca 5	1	920	Specie A	1	128	26				
			Specie A	1	140	34				
			Specie A	1	142	36,5				
			Specie A	1	152	39,5				
			Specie A	1	151	39				
			Specie A	1	146	33,5				
			Specie A	1	131	27,5				
			Specie A	1	98	8,5				
			Specie A	1	121	17,5				
			Specie A	1	103	-				

Handwritten signature and initials, possibly 'CFF' and 'RV', located at the bottom right of the page.

Giornata 12	Barca 6	1	750	Specie A	1	130	25
				Specie A	1	117	16,5
				Specie A	1	116	16
				Specie A	1	130	25
				Specie A	1	133	24,5
				Specie A	1	152	40
				Specie A	1	139	31
				Specie A	1	121	18
				Specie A	1	113	15,5
				Specie A	1	108	11,5
				Specie A	1	121	17,5
				Specie A	1	141	-
				Specie A	1	103	-
	Barca 1	1	750	Specie A	1	94	7,5
				Specie A	1	99	9
				Specie A	1	154	42
				Specie A	1	126	22,5
	Barca 2	1	880	Specie A	1	-	21,5
				Specie A	1	-	19
				Specie A	1	-	24,5
			Specie A	1	-	7,5	
			Specie A	1	-	17	
Barca 3	1	750	Specie A	1	-	16	
			Specie A	1	-	26	
			Specie A	1	-	13	
			Specie A	1	-	11	
			Specie A	1	-	12	
			Specie A	1	-	21	
			Specie A	1	-	5,5	
Barca 4	1	860	Specie A	1	144	40	
			Specie A	1	150	40,5	
			Specie A	1	141	29,5	
			Specie A	1	128	24	
			Specie A	1	128	24	
			Specie A	1	137	29	
			Specie A	1	121	20,5	
			Specie A	1	128	23	
			Specie A	1	118	13	
			Specie A	1	100	11	
			Specie A	1	96	-	
Barca 5	1	780	Specie A	1	180	60,5	
			Specie A	1	160	40,5	
			Specie A	1	123	23,5	
			Specie A	1	121	17,5	
			Specie A	1	108	10	
			Specie A	1	117	16	
			Specie A	1	116	19,5	
			Specie A	1	133	28,5	
			Specie A	1	118	-	
Barca 6	1	1830	Specie A	1	-	17,5	
			Specie A	1	-	15	
			Specie A	1	-	33,5	
			Specie A	1	-	10,5	
			Specie A	1	-	23	
			Specie A	1	-	19	
			Specie A	1	-	29	
			Specie A	1	-	13	
			Specie A	1	-	23,5	
			Specie A	1	-	12,5	
			Specie A	1	-	29	
			Specie A	1	-	37	
			Specie A	1	-	17	
			Specie A	1	-	22,5	
			Specie A	1	-	35	
			Specie A	1	-	22,5	
			Specie A	1	-	23	
			Specie A	1	-	27	
			Specie A	1	-	43,5	
			Specie A	1	-	32,5	
			Specie A	1	-	42	
			Specie A	1	-	30	
			Specie A	1	-	25,5	
			Specie A	1	-	41	

Handwritten signatures and initials, including a large stylized signature and several smaller initials.

				<i>Specie A</i>	1	-	23
				<i>Specie A</i>	1	-	19
				<i>Specie A</i>	1	-	20,5
				<i>Specie A</i>	1	-	26,5
				<i>Specie A</i>	1	-	11,5
				<i>Specie A</i>	1	-	17
				<i>Specie A</i>	1	-	19,5
				<i>Specie A</i>	1	-	29,5
				<i>Specie A</i>	1	-	11,5
				<i>Specie A</i>	1	133	29
				<i>Specie A</i>	1	152	42
				<i>Specie A</i>	1	128	25
				<i>Specie A</i>	1	90	-
Giornata 13	Barca 1	1	720	<i>Specie A</i>	1	137	29,5
				<i>Specie A</i>	1	139	32
				<i>Specie A</i>	1	120	23
				<i>Specie A</i>	1	98	9,5
				<i>Specie A</i>	1	100	9
				<i>Specie A</i>	1	108	12,5
				<i>Specie A</i>	1	84	-
				<i>Specie A</i>	1	92	-
	Barca 2	1	810	<i>Specie A</i>	1	141	32
				<i>Specie A</i>	1	139	29
				<i>Specie A</i>	1	129	27,5
				<i>Specie A</i>	1	119	22,5
				<i>Specie A</i>	1	120	-
				<i>Specie A</i>	1	89	-
				<i>Specie A</i>	1	116	-
	Barca 3	1	1000	<i>Specie A</i>	1	144	28,5
				<i>Specie A</i>	1	142	31
				<i>Specie A</i>	1	121	20
				<i>Specie A</i>	1	138	36,5
				<i>Specie A</i>	1	152	44,5
				<i>Specie A</i>	1	154	55
				<i>Specie A</i>	1	124	23,5
				<i>Specie A</i>	1	177	56
				<i>Specie A</i>	1	144	38
				<i>Specie A</i>	1	143	36,5
				<i>Specie A</i>	1	110	15,5
				<i>Specie A</i>	1	109	13,5
				<i>Specie A</i>	1	118	19,5
				<i>Specie A</i>	1	112	17,5
				<i>Specie A</i>	1	136	32,5
				<i>Specie A</i>	1	132	26
				<i>Specie A</i>	1	128	23
				<i>Specie A</i>	1	112	15
				<i>Specie A</i>	1	136	31
				<i>Specie A</i>	1	109	15
				<i>Specie A</i>	1	91	-
				<i>Specie A</i>	1	133	-
				<i>Specie A</i>	1	118	-

Totali	Barca 1	Barca 2	Barca 3	Barca 4	Barca 5	Barca 6
--------	---------	---------	---------	---------	---------	---------

N° cale totali

N° ami totali

N° ami medi per cala

Pescato totale (Kg)

Pescato totale (n)

CPUE totale (kg)

CPUE totale (n)

Peso medio pesci

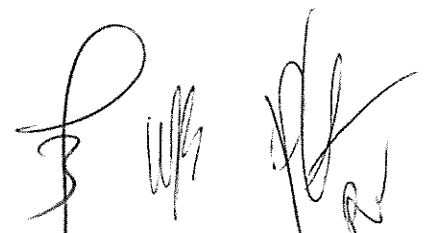
Taglia media

Handwritten signature and initials, possibly 'L' and 'R'.

ALLEGATO N°3

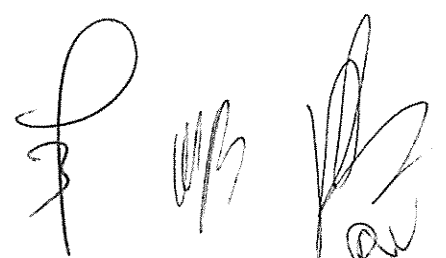
Parametri della curva di crescita

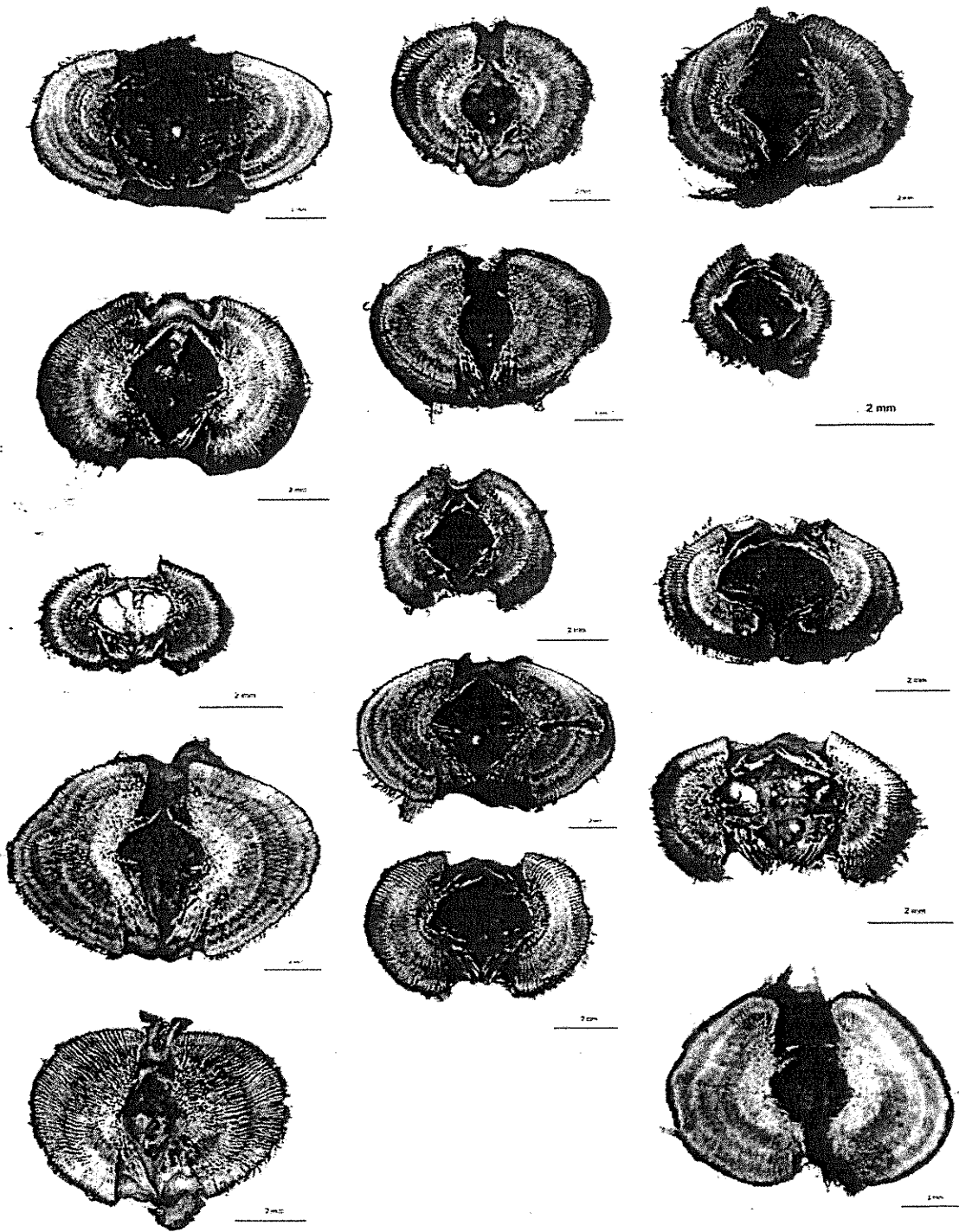
Authors	Sex	Linf	k	t0
Valeiras <i>et al.</i> , 2008	M	185,57	0,219	-1,968
Valeiras <i>et al.</i> , 2008	F	263,559	0,119	-2,27
Tserpes & Tsimenides, 1995	M	203,076	0,241	-1,205
Tserpes & Tsimenides, 1995	F	226,525	0,21	-1,165

Handwritten signatures in black ink, appearing to be initials or names, located in the bottom right corner of the page.

Dati delle sezioni di cui si deve determinare l'età

ID	Date	LJFL	W	Sex	AGE (years)
1	06/08/19	150	44	M	
2	26/06/17	111	15	M	
3	17/07/17	81	6	F	
4	16/08/17	153	49	M	
5	25/08/17	133	27	M	
6	22/08/17	124	22,5	F	
7	22/08/17	130	25	M	
8	25/08/17	96	9	F	
9	02/09/17	144	38	M	
10	22/08/17	113	15	F	
11	25/09/09	131	28	M	
12	15/10/17	73	3	F	
13	15/10/17	105	12,5	F	
14	15/10/17	96	8,5	F	
15	21/04/07	171	65	F	





F
W
W